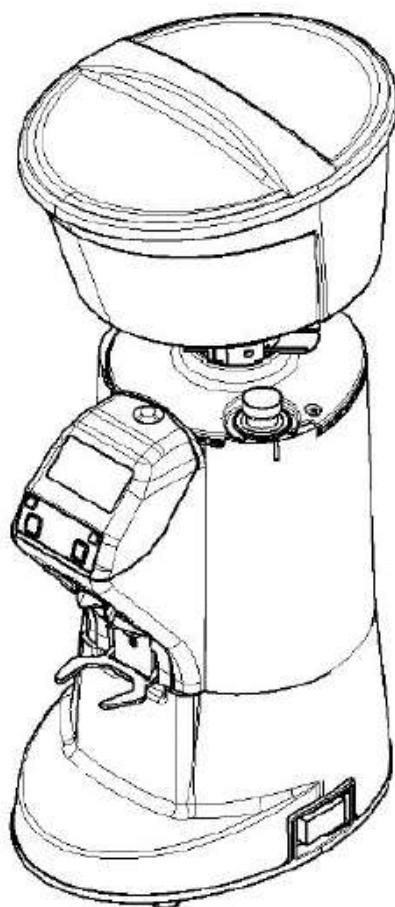


# SPARE PARTS BOOK

# MDXS



**ON DEMAND VERSION**

30/11/2020



T.01 **GRINDERS PARTS**  
PARTI MACINADOSATORE

» LEGEND :

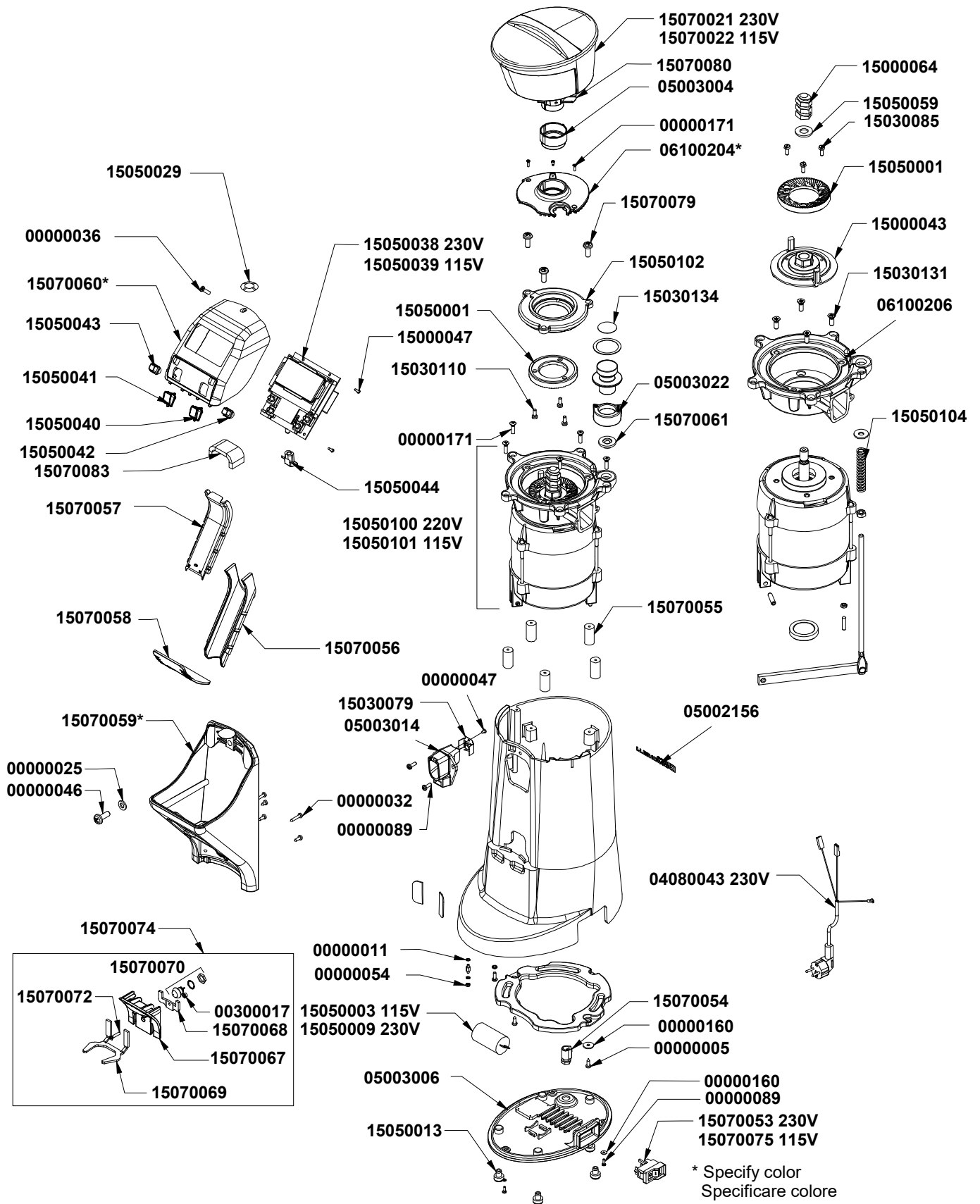
THE CODES WRITTEN IN BOLD REFER TO THE COMPONENTS  
EMPLOYED CURRENTLY.

THE CODES USED BEFORE ARE WRITTEN IN CORSIVE WITH INDICATED,  
ON THE SIDE, THE END OF VALIDITY DATE.

EXAMPLE:

*03001531 - 01/09/2007*

**03001531**



T.01

| COD.        | DESCRIPTION                                      | DESCRIZIONE                                            | VAL. |
|-------------|--------------------------------------------------|--------------------------------------------------------|------|
| 00000005    | GALV SELF-TAPPING SCREW 3,9x13                   | VITE AUTOF 3,9X13 ZIN TC/T.CR.                         |      |
| 00000011    | S/S KNURLED WASHER M4 UNI8842/A                  | RONDELLA INOX M4 ZIGRINATA UNI8842/A                   |      |
| 00000025    | GALV CROSS HEAD CAP SCREW AQ M6x20               | VITE AQ M6X20 TC T.CR. ZINC                            |      |
| 00000032    | SELF-TAPPING CROSS HEAD CAP SCREW 2.9x9.5        | VITE AUTOF 2,9X9,5 TC TCR                              |      |
| 00000036    | GALV CROSS HEAD COUNTERSUNK SCREW M3x10          | VITE AQ M3X10 T SVP T.CR.ZINC                          |      |
| 00000046    | GALV WASHER M6 6,4X12,5X1,6                      | RONDELLA AQ M6 6,4X12,5X1,6 Z.                         |      |
| 00000047    | CROSS HEAD/CAP SELF-TAPPING SCREW 2,9x6,5        | VITE AUTOF 2,9X6,5 TC/T.CR.                            |      |
| 00000054    | GALV HIGH NUT M4                                 | DADO AQ M4 ALTO ZINCATO                                |      |
| 00000089    | S/S CROSSHEAD CAP SCREW M4x12 DIN7985            | VITE INOX M4X12 TC TCR DIN7985                         |      |
| 00000160    | S/S WASHER D4X12 UNI 6593                        | RONDELLA INOX D4X12X1 UNI 6593                         |      |
| 00000171    | S/S HEXAGON SOCKET CS FH CAP SCREW M4x16 UNI 59  | VITE INOX M4X16 TSPEI UNI 5933                         |      |
| 00300017    | S/S SELF-LOCKING NUT M4 LOW DIN 982              | DADO AUTOBLOC INOX M4 BASSO DIN985                     |      |
| 04080043    | CABLE+PLUG CE SCHUKO H05VV-F 3x0,75              | CAVO ALIM. 2MT CE SPINA SCHUKO 90° H05VV-F 3X0,75      |      |
| 05002156    | LABEL NUOVA SIMONELLI PRONTOBAR L100             | ETICHETTA "NUOVA SIMONELLI" PRONTOBAR L=100            |      |
| 05003004    | HOPPER ADAPTER MDJ                               | GUARNIZ. ADATTAMENTO CAMPANA MDJ                       |      |
| 05003006    | BASE CLOSURE MDJ                                 | FONDO CHIUSURA MDJ                                     |      |
| 05003014    | COFFEE OUTPUT ADAPTER MDJ OD                     | BOCCHETTONE USCITA CAFFE' MDJ ON DEMAND                |      |
| 05003022    | GRINDER KNOB SPACER MDJ                          | DISTANZIALE POMELLO MACINATURA MDJ                     |      |
| 06100204.BV | GRINDER BODY COVER PAINTED WHITE                 | COPERCHIO CORPO MACININO BIANCO VERN.                  |      |
| 06100204.C  | GRINDER BODY COVER CHROME                        | COPERCHIO CORPO MACININO CROMATO                       |      |
| 06100204.NV | GRINDER BODY COVER PAINTED BLACK                 | COPERCHIO CORPO MACININO NERO VERN.                    |      |
| 06100204.RV | GRINDER BODY COVER PAINTED RED                   | COPERCHIO CORPO MACININO ROSSO VERN.                   |      |
| 06100206    | ENGINE SUPPORT MDJ                               | SUPPORTO MOTORE MDJ                                    |      |
| 15000043    | INFERIOR BURR HOLDER 65mm 25010002               | PORTAMACINE INF. MM65 25010002                         |      |
| 15000047    | FOOT MDE/MDL/FRU2-525200004                      | PIEDINO MDE/MDL/FRU2-525200004                         |      |
| 15000064    | NUT-STOP BURR HOLDER 2501.0003                   | DADO FERMA PORTAMACINE 2501.0003                       |      |
| 15030079    | CLUMP CRUSHER FLANGE MYTHOS sp.0,19-MDJ OD 230   | FRANGIA CLUMP CRUSHER MYTHOS SP.0,19 4100.0083         |      |
| 15030085    | S/S SCREW M4x10 TCT(-) CUTTING HEAD 6060.0002    | VITE INOX M4X10 TCT(-) TESTA TAGLIO 6060.0002 FISS. M/ |      |
| 15030110    | S/S SCREW M4x8 CUT HEAD 6060.0032                | VITE INOX M4X8 TESTA TAGLIO 6060.0032                  |      |
| 15030131    | S/S SCREW M6x16 TSP T.CR. 6060.0012              | VITE INOX M6X16 TSP T.CR. 6060.0012                    |      |
| 15030134    | HANDLE ADHESIVE LABEL GRINDER REGISTER E80       | ETICHETTA REGOLAZ. MACINATURA SU POMELLO E80           |      |
| 15050001    | BURR PAIR D.64 MDX/MASTER                        | COPPIA MACINE D.64 MDX/MASTER                          |      |
| 15050003    | CAPACITOR 20microF 115V                          | CONDENS. 20MICROF 115V                                 |      |
| 15050009    | CAPACITOR 10microF x 04500031                    | CONDENS. 10MICROF X 04500031                           |      |
| 15050013    | FOOT MDU/MDX 2501.0004                           | PIEDINO MDU/MDX 2501.0004                              |      |
| 15050029    | LABEL LOGO MNS SMALL E66                         | ETICHETTA LOGO MNS PICCOLA E66                         |      |
| 15050038    | BOARD DISPLAY 4KEY ON DEMAND 230V "NS" 4410.0001 | SCHEDA DISPLAY 4 PULSANTI ON DEMAND 230V "NS" 4410     |      |
| 15050039    | BOARD DISPLAY 4KEY ON DEMAND 115V "NS" 4410.0002 | SCHEDA DISPLAY 4 PULSANTI ON DEMAND 115V "NS" 4410     |      |
| 15050040    | SILK SCREEN PRINTING DOSE 2 BUTTON ON DEMAND     | TASTO DOSE 2 SERIGR. ON DEMAND 4400.0010D2ST           |      |
| 15050041    | SILK SCREEN PRINTING DOSE 1 BUTTON ON DEMAND     | TASTO DOSE 1 SERIGR. ON DEMAND 4400.0010D1ST           |      |
| 15050042    | KEY + DOSE INCREASE ON DEMAND 4400.0011+ST       | TASTO + AUMENTO DOSE ON DEMAND 4400.0011+ST            |      |
| 15050043    | KEY - DOSE DECREASE ON DEMAND 4400.0011-ST       | TASTO - DECREMENTO DOSE ON DEMAND 4400.0011-ST         |      |
| 15050044    | LIGHTGUIDE FOR FILTER HOLDER ON DEMAND 4400.0013 | GUIDALUCE PER FILTRO ON DEMAND 4400.0013               |      |
| 15050059    | S/S WASHER M10 10,5x21 UNI6592 6061.0001         | RONDELLA INOX M10 10,5X21 UNI6592 6061.0001            |      |
| 15050100    | COMPLETE ENGINE 220V                             | MOTORE COMPLETO MDXS 220V                              |      |
| 15050101    | COMPLETE ENGINE 110V                             | MOTORE COMPLETO MDXS 110V                              |      |
| 15050102    | SUPERIOR BURR HOLDER MDXS 0613.0005              | PORTAMACINA SUP. MDXS 0613.0005                        |      |
| 15050104    | GRINDING REGULATOR SPRING ROD 6002.7360          | MOLLA TIRANTE REG. MACINATURA 6002.7360                |      |
| 15070021    | COMPLETE HOPPER MDJ 05013000                     | CAMPANA COMP. MDJ 05013000                             |      |
| 15070022    | COMPLETE HOPPER MDJ CSA                          | CAMPANA COMP. MDJ CSA                                  |      |

| COD.       | DESCRIPTION                                      | DESCRIZIONE                                            | VAL. |
|------------|--------------------------------------------------|--------------------------------------------------------|------|
| 15070053   | SWITCH 220V MDJ-MDXS-M2 1011.0052                | INTERUTTORE 220V MDJ-MDXS-M2 1011.0052                 |      |
| 15070054   | CABLE CLAMP FROM PANEL MM. 13                    | FERMACAVO DA PANNELLO MM. 13                           |      |
| 15070055   | ANTIVIBRATION D15xH30xL13 M4 M/F SH.57 6040.0055 | ANTIVIBRANTE D15XH30XL13 M4 M/F SH.57 6040.0055        |      |
| 15070056   | CHUTE ON DEMAND POLISHED 4400.0004               | SCIVOLO ON DEMAND LUCIDATO 4400.0004                   |      |
| 15070057   | COVER SHUTE MDJ OD 4400.0005                     | COPERCHIETTO SCIVOLO ON DEMAND 4400.0005               |      |
| 15070058   | PLATE FOR SHUTE MDJ OD4400.0006                  | BASCULA SCIVOLO ON DEMAND 4400.0006                    |      |
| 15070059.0 | RED GROUP FLOWMETER BODY                         | CORPO GR. DOSAT. COLORE ROSSO                          |      |
| 15070059.2 | BLACK GROUP FLOWMETER BODY                       | CORPO GR. DOSAT. COLORE NERO                           |      |
| 15070059.8 | WHITE GROUP FLOWMETER BODY                       | CORPO GR. DOSAT. COLORE BIANCO                         |      |
| 15070060.2 | BLACK COMMAND PANEL                              | CONSOLE COMANDI COLORE NERO                            |      |
| 15070060.8 | WHITE COMMAND PANEL                              | CONSOLE COMANDI COLORE BIANCO                          |      |
| 15070061   | ROD BUSHING POSITIONING - MDJ TEFLON 2501.0026   | BOCCOLA CENTRAGGIO ASTA X MDJ TEFLON 2501.0026         |      |
| 15070067   | NEW INLAY PORTAFILTER ON DEMAND 4400.0032        | NUOVO TASSELLO PORTAFILTRO ON DEMAND 4400.0032         |      |
| 15070068   | BRACKET LOCKING FORK                             | STAFFA BLOCCAGGIO FORCELLA                             |      |
| 15070069   | ADJUSTABLE FILTER HOLDER FORK                    | FORCELLA PORTAFILTRO REGOLABILE                        |      |
| 15070070   | KIT MICRO (1000.0007 + CABLE73 +6062.0018-007)   | KIT MICRO (1000.0007 + CAV73 +6062.0018-007) 4402.8000 |      |
| 15070072   | S/S SCREW M4x20 ROUND HEAD 6060.0146             | VITE INOX M4X20 TESTA X SVAS. BOMBATA 6060.0146        |      |
| 15070074   | NEW KIT GROUP BLOCK FORK MDJ OD 4124401.5200     | KIT NUOVO GRUP.BLOCCO FORCELLA MDJ OD 4124401.5        |      |
| 15070075   | SWITCH 110V MDJ-MDXS-M2 1011.0051                | INTERUTTORE 110V MDJ-MDXS-M2 1011.0051                 |      |
| 15070079   | SCREW AQ M6x16 TC T.CR. GALV 6060.0022           | VITE AQ M6X16 TC T.CR. ZINC 6060.0022                  |      |
| 15070080   | TONGUE BELL MDJ-MDXS                             | LINGUETTA CAMPANA MDJ-MDXS                             |      |
| 15070083   | COFFEE SPRAY GUARD GASKET                        | GUARNIZIONE PARASPRUZZO CAFFE'                         |      |

[www.nuovasimonelli.it](http://www.nuovasimonelli.it)

---

**Simonelli Group**

Via E. Betti, 1  
62020 Belforte del Chienti  
Macerata Italy  
T +39 0733 9501  
F +39 0733 950242  
info@simonelligroup.it  
www.simonelligroup.it

**Nuova Distribution Usa**

6940 Salashan Pkwy, Bldg. A  
Ferndale, WA 98248  
T +1 360 366 2226  
F +1 360 366 4015  
info@simonelliusa.com  
www.simonelliusa.com

**Nuova Simonelli Asia Pacific**

61 Kaki Bukit Ave 1  
#02-24 Shun Li Industrial Park  
Singapore 417943  
T +65 68410985  
www.nuovasimonelliasiapacific.com

**Nuova Distribution France**

Hexapole - Actipole - Bat 5  
Rue Maurice Herzog  
73420 Viviers Du Lac  
T +33 (0) 9 67894852  
F +33 (0) 4 79544852  
info@nuovadistribution.fr



 **nuova**  
**SIMONELLI®**  
The coffee machines you can trust.